

Amira Manual

1 Amira

Version	Amira 6.2
Modules	XBioFormats, XImagePAQ, XLVolume, XMesh, XMolecular, XSkeleton
License Type	Node-locked

To use Amira booking for Workstation is needed, as it is available only on Workstation, thus no separate booking for Amira is needed.

1.1 How to access Amira

Amira can be used only on Workstation 1, thus you have to have reservation in the IMCF booking system (currently Ceitec booking system). Amira must be remotely accessed by Virtual Network Computing (VNC) with separate software TightVNC. VNC is a different protocol to connect to a remote computer than Remote Desktop Connection.

To use TightVNC you may use offline analysis computer in the IMCF or your personal/work computer:

- To use any of the offline analysis computers in IMCF separate reservation for the OA computer is needed. To connect to Workstation 1 by VNC follow Section 2.2.
- To use TightVNC on your computer follow Section 2.1 to install the software and then follow Section 2.2 to connect to Workstation 1.

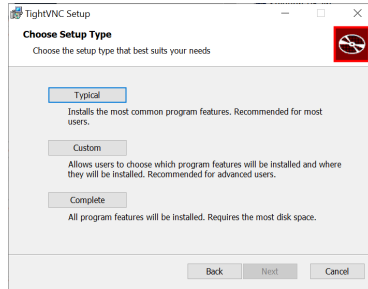
Your computer must be in the internal BIOCEV network (locally or by VPN) to access the workstation. Connect by VPN to the internal network using the manual at intranet.biocev.org/. Users outside Faculty of Science, BIOCEV, must ask IMCF staff (dalibor.panek@natur.cuni.cz) for access to RDC and VNC services. Please provide your BIOCEV user name for access via VPN and/or IP address for direct access from computers at BIOCEV.

2 Workstation by Virtual Network Computing

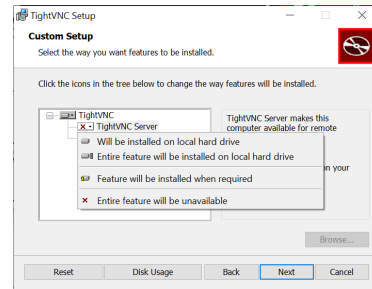
2.1 Installation of TightVNC

To install TightVNC on your computer proceed through each step as follows:

- **Download TightVNC** from this link: tightvnc.com/download.
- Choose **Custom Setup**
- Click on TightVNC Server and choose **Entire feature will be unavailable**
- **Proceed** with installation



(a) Choose Custom Setup.



(b) Click on TightVNC Server and choose Entire feature will be unavailable.

2.2 Connect to Workstation

Instructions to connect to Workstation 1 in TightVNC Viewer:

Remote Host: 10.11.17.55::5903

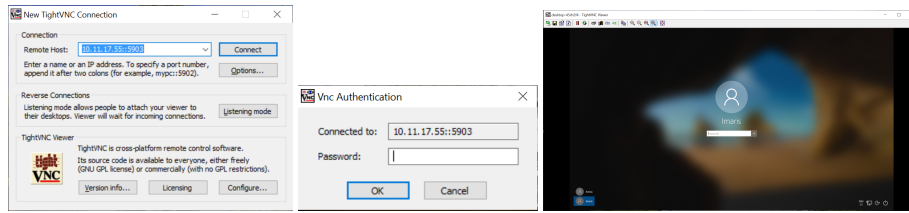
Press **Connect**

Password: imcf

Choose **User Workstation 1** account in Windows

Password for User Workstation 1 account: imcf

Once connected, set good resolution for your display (default 1920x1080) by adjusting the zoom or enter Full-screen (exit full-screen by pressing Alt+Ctrl+Shift+F).



(a) TightVNC Viewer - IP address. (b) Password submission. (c) Choose User Workstation 1 account and submit password.

3 Tips

When using the Workstation save your files locally on the D: Disk Drive, as the transfer from SCRATCH is slower and the usage in software may be slowed down by accessing files on Network Drives.